



STAINLESS STEEL WHEELED TUBS

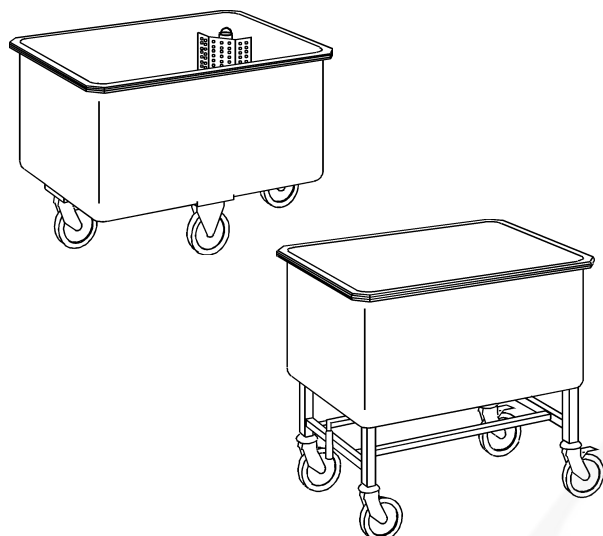
TECHNICAL CHARACTERISTICS

Reference 806 050:

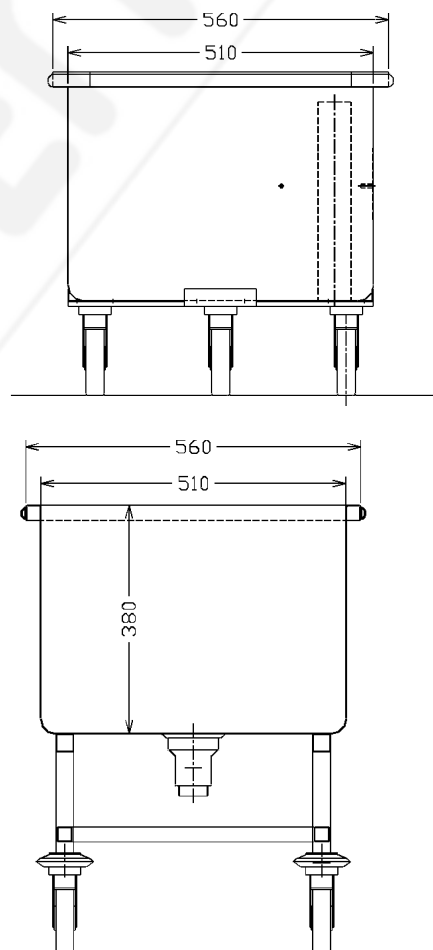
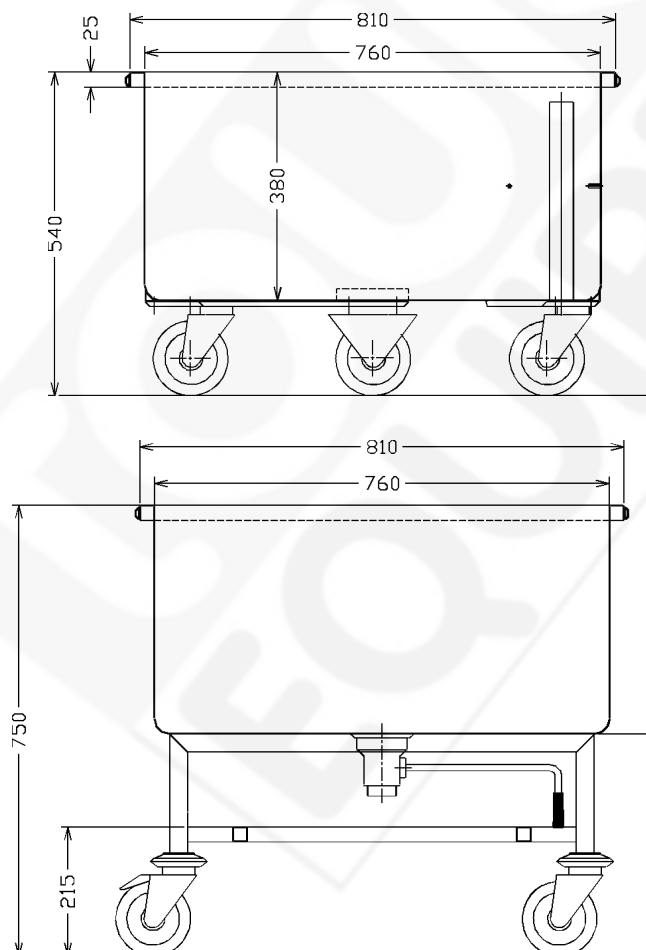
- Strainer grid and overflow
- 4 swivelling wheels Ø 125 mm with galvanised steel cover, 2 of which with brake
- Bumper all round
- Delivered wrapped in plastic film

Reference 806 051:

- Overflow with lever + retaining grid
- 4 swivelling wheels Ø 125 mm with polyamide cover, 2 of which with brake
- Bumper all round
- Delivered wrapped in plastic film



Descriptions	Dimensions	References
140 litre stainless steel tub	810 x 560 x 540	806 050
Raised 140 litre stainless steel tub	810 x 560 x 750	806 051
Extra for castors with stainless steel flange on tub 806 050	*	702 202



Non contractual document. The characteristics given are liable to change with a view to improvement.

TOURNUS EQUIPEMENT-25 avenue Jean Moulin-B.P.59 F-71700
TOURNUS - Tel +33 (0)3 85 27 42 65 - Fax +33 (0)3 85 27 42 60